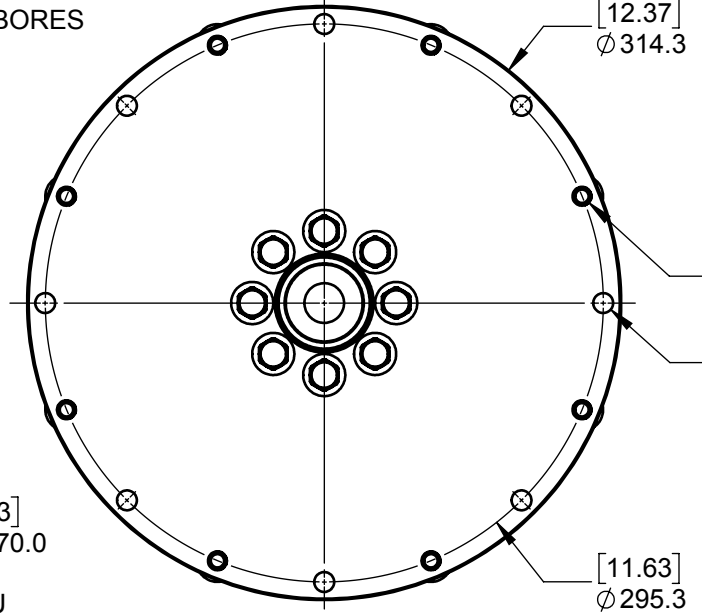
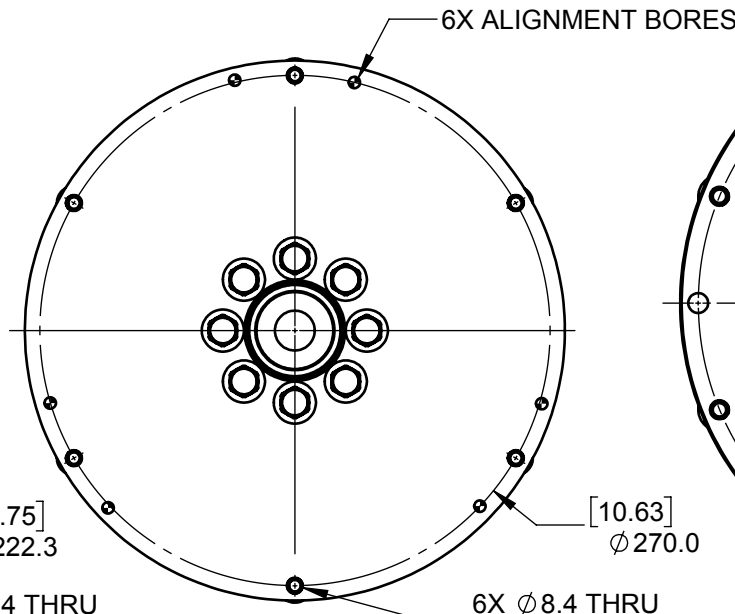
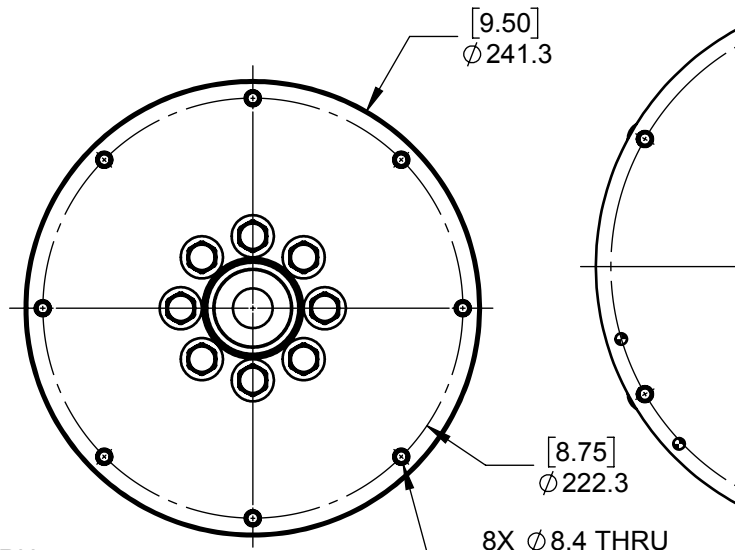
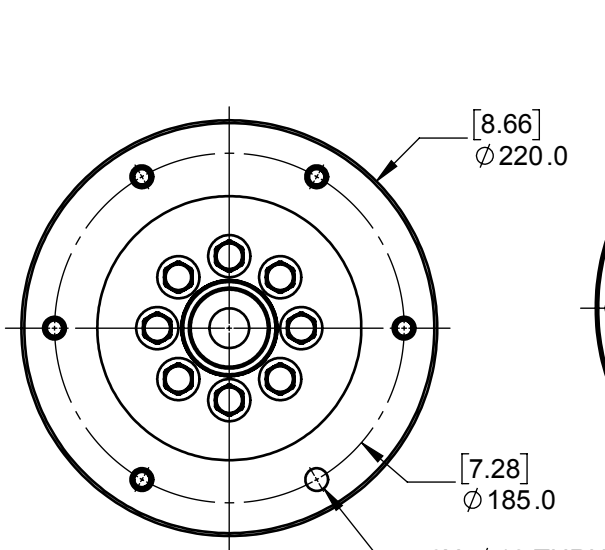
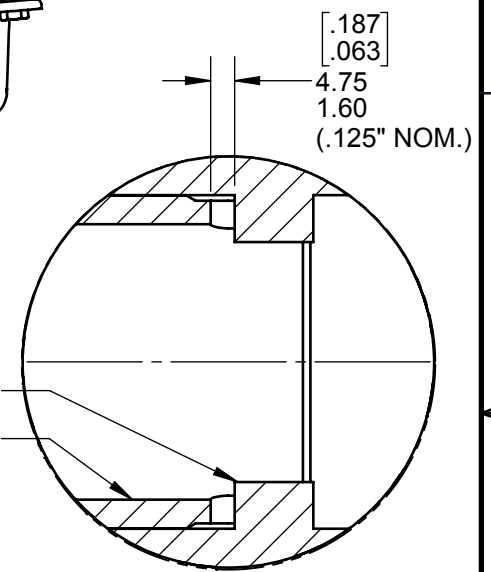
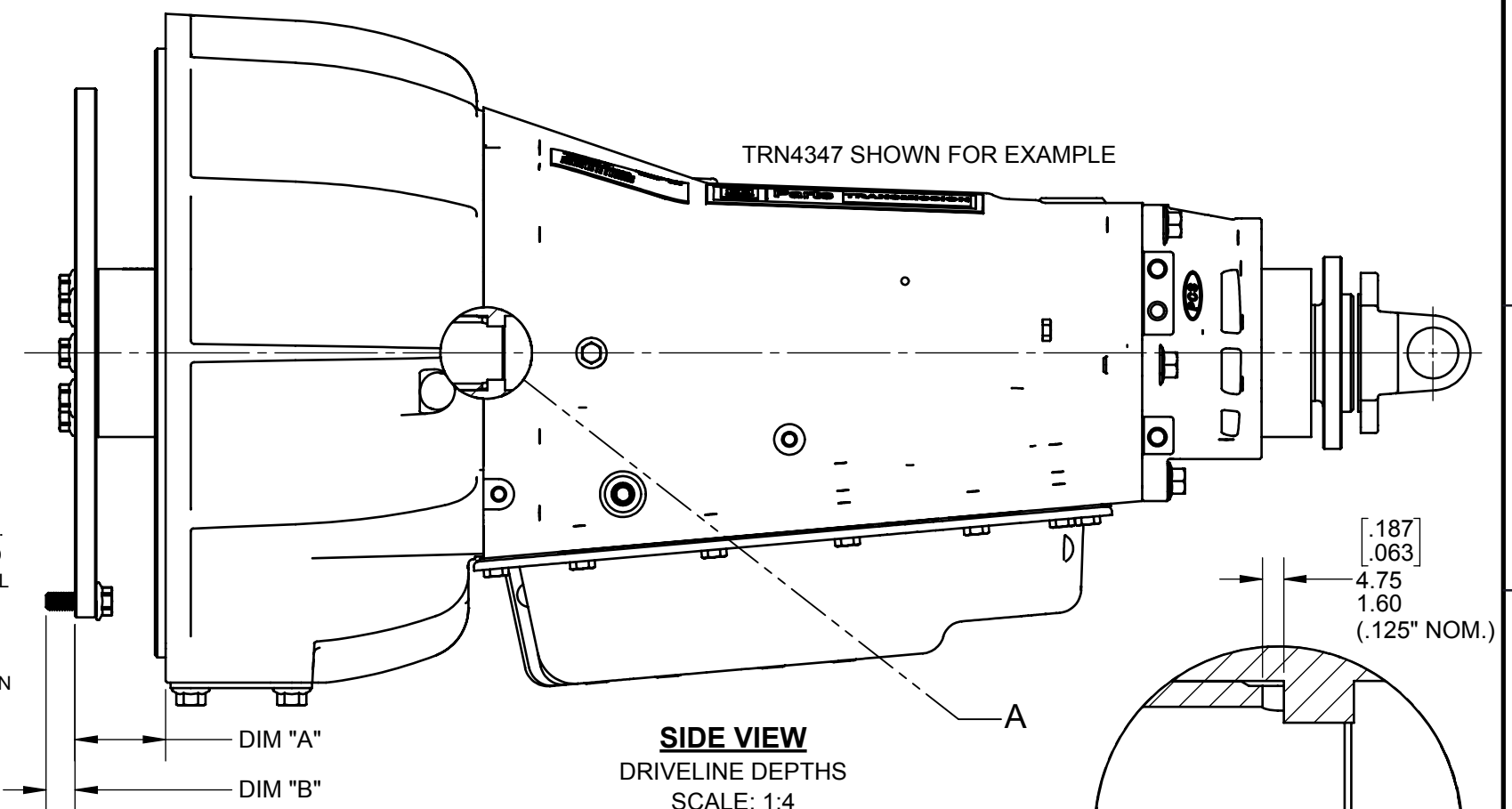


PCS P/N	"A" - 4LHD / 258mm	"A" - 4LHDX / 300mm	FLYWHEEL	BOLT PITCH	BOLT, DIM "B" mm
TRN8205	83.4	94.4	FORD DSG	M8X1.25	12.3
TRN8222	53.8	64.8	SAE10	NOTE 3	NOTE 3
TRN8216	51.9	62.9	SAE10	3/8-16"	9.5
TRN8224	39.4	50.4	SAE10	NOTE 3	NOTE 3
TRN8310	36.9	47.9	SAE10	3/8-24"	22.4
TRN8217	36.8	47.8	SAE10	3/8-16"	7.2
TRN8218	30.4	41.4	SAE7.5	5/16-18"	15.9
TRN8220	28.5	39.5	SAE7.5	5/16-18"	12.7
TRN8219	12.9	23.9	SAE10	M10X1.25	12.3
TRN8215	12.2	23.2	BBS	M10X1.25	15.0
TRN8221	10.4	21.4	SAE10	NOTE 3	NOTE 3
TRN8223	3.8	14.8	BBS	M10X1.25	15.0
TRN8200	1.5	12.5	SAE10	M10X1.50	12.3

- NOTES:**
- INTERPRET THIS DRAWING PER ASME Y14.5-2009.
 - DO NOT INSTALL ANY DRIVELINE COMPONENTS THAT SHOW MANUFACTURING DEFECTS OR SHIPPING / HANDLING DAMAGE.
 - BEFORE ORDERING ANY OF THE KITS ABOVE, IT IS CRITICAL TO CHECK BOTH THE DISTANCE BETWEEN THE FLYWHEEL AND FLYWHEEL-HOUSING MATING FACES AS WELL AS THE BOLT THREADS AND DEPTHS. SOME KITS DO NOT INCLUDE FLYWHEEL MATING HARDWARE TO AVOID THIS CONFUSION. HARDWARE AVAILABLE SEPARATELY.
 - CONTACT PCS IF ANY COMBINATION OF DEPTH (DIM "A") AND HARDWARE DO NOT MATCH FOR YOUR APPLICATION.
 - DURING TRANSMISSION TO ENGINE INSTALLATION IT IS CRITICAL TO VERIFY THE TORQUE CONVERTER PULLOUT. FAILURE TO DO SO WILL VOID THE WARRANTY AND MAY CAUSE PERMANENT DAMAGE TO THE TRANSMISSION. THIS PROCEDURE CAN BE FOUND IN THE *PCS 4LHD TECHNICIANS GUIDE* OR THE *PCS 4LHD APPLICATION GUIDE*.



FRONT VIEW
BBS / SAE5 ADAPTER
SCALE: 1:4

FRONT VIEW
SAE7.5 ADAPTER
SCALE: 1:4

FRONT VIEW
FORD DSG ADAPTER
SCALE: 1:4

FRONT VIEW
SAE10 ADAPTER
SCALE: 1:4

		Powertrain Control Solutions <i>Engineering the future of driveline control</i>	
DESCRIPTION			
ENGINE SPACER CHART			
USED ON	NEXT ASSEMBLY	SIZE	DRAWING NO.
		B	N/A
DRAWN BY	MFP	6/1/2018	REV
ENG APPR.			1
DIMENSIONS ARE IN INCHES		SCALE: 1:12	SHEET 1 OF 1

PROPRIETARY AND CONFIDENTIAL
THE INFORMATION CONTAINED IN THIS DRAWING IS THE SOLE PROPERTY OF PCS. ANY REPRODUCTION IN PART OR AS A WHOLE WITHOUT THE WRITTEN PERMISSION OF PCS IS PROHIBITED.