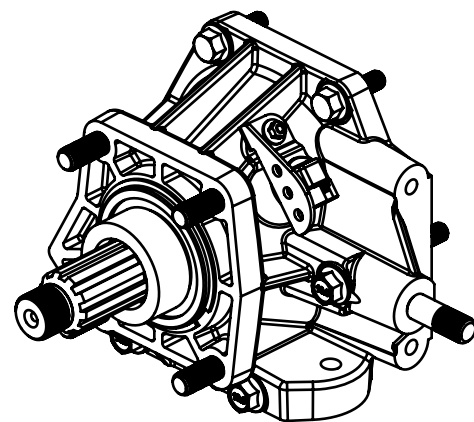
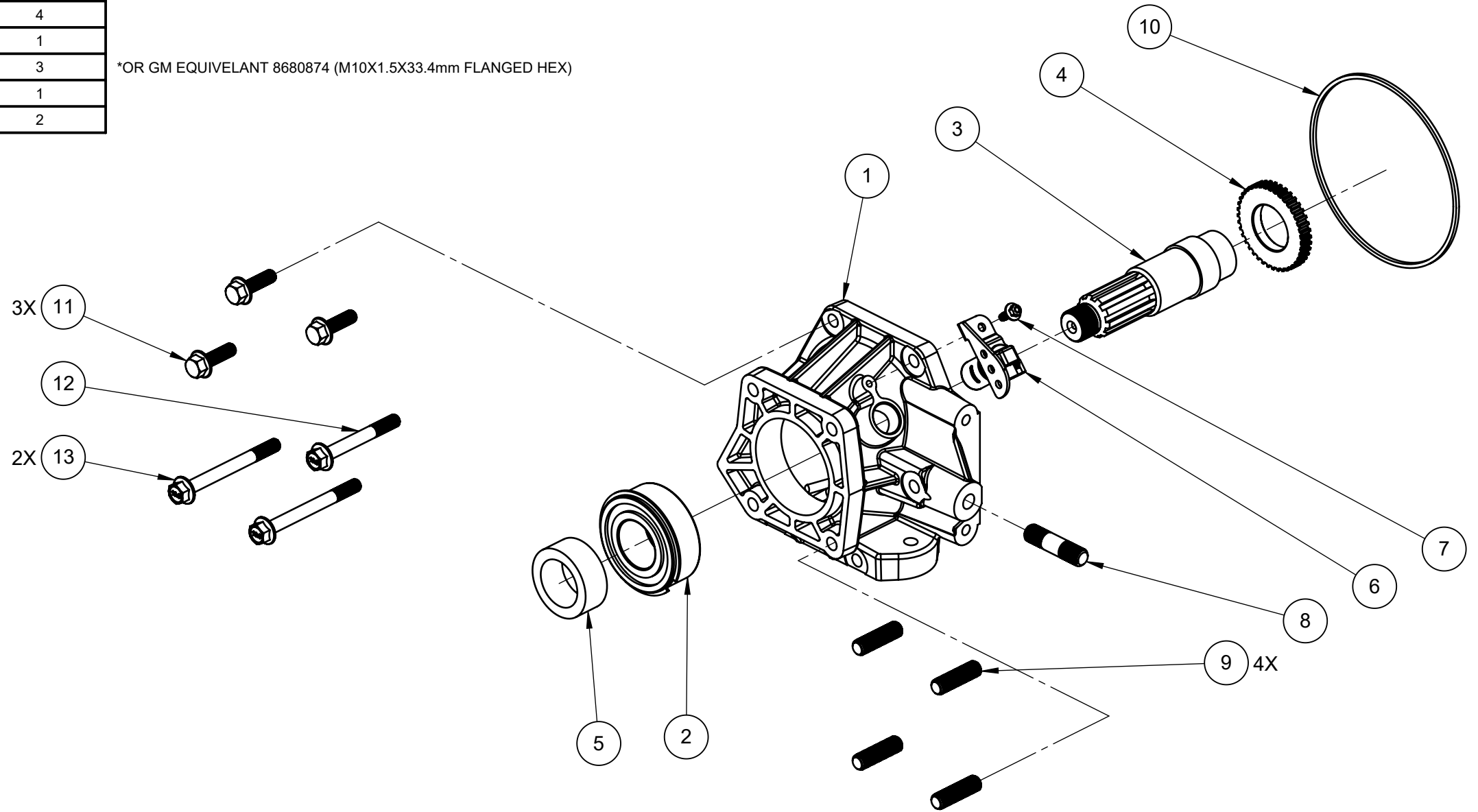


BOM #	DESCRIPTION	PCS PART #	QTY
1	EXTENSION HOUSING - C6 TO 4LHD	BEL2407	1
2	5208 NR DOUBLE BALL BEARING	TRN0226	1
3	C6 OUTPUT SHAFT ADAPTER	BEL2408	1
4	PCS SPEED GEAR	TPB5011	1
5	SPACER - C6 OUTPUT SHAFT ADAPTER	TRN0214	1
6	4LHD OUTPUT SPEED SENSOR	TRN7060	1
7	BOLT, M6X1.00X16mm FLANGED HEX	TRN7521	1
8	9/16-12" TO 9/16-18" ADAPTER STUD	TRN0204	1
9	1/2-13 TO 1/2-20 ADAPTER STUD	TRN0205	4
10	SEAL - 4LHD EXTENSION HOUSING	TRN7062	1
11	BOLT, M10X1.5X35mm FLANGED HEX	TRN7526	3
12	BOLT, M10X1.5X80mm FLANGED HEX	TRN0211	1
13	BOLT, M10X1.5X100mm FLANGED HEX	TRN0210	2

*OR GM EQUIVELANT 8680874 (M10X1.5X33.4mm FLANGED HEX)



ISO VIEW
ASSEMBLED
SCALE: 1:4



EXPLODED VIEW
KIT COMPONENTS
SCALE: 1:4

NOTES:

- DO NOT INSTALL DRIVELINE COMPONENTS ON THR TRANSMISSION OR IN THE VEHICLE IF THEY SHOW SIGNS OF MANUFACTURING DEFECTS OR SHIPPING / HANDLING DAMAGE.
- FOR MORE INFORMATION ON TRANSMISSION ASSEMBLY AND INSTALLATION PROCEDURES SEE THE "PCS C6 INSTALLATION GUIDE", "PCS 4LHD APPLICATION GUIDE", OR CONSULT PCS ENGINEERING.
- REVISION "B" REMOVED THE 1-20" NUT FROM THE KIT.

PROPRIETARY AND CONFIDENTIAL
THE INFORMATION CONTAINED IN THIS DRAWING IS THE SOLE PROPERTY OF PCS. ANY REPRODUCTION IN PART OR AS A WHOLE WITHOUT THE WRITTEN PERMISSION OF PCS IS PROHIBITED.

DRAWN BY: MFP
ENG APPR.:
DIMENSIONS ARE IN INCHES
SCALE: 1:8
SHEET 1 OF 1

Powertrain Control Solutions Engineering the future of driveline control	
DESCRIPTION	
C6 EXTENSION HOUSING KIT	
USED ON	NEXT ASSEMBLY
ERROR:Project (US...)	ERROR:NEXT ASSE2
ERROR:NEXT ASSEM	
SIZE	DRAWING NO.
B	TRN8800
REV	B