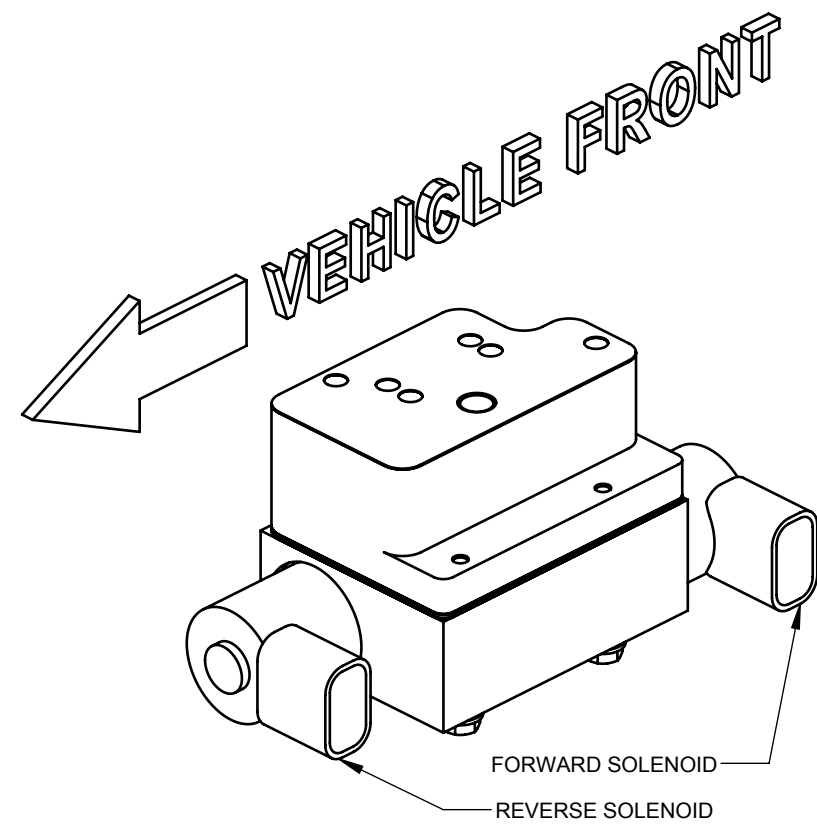
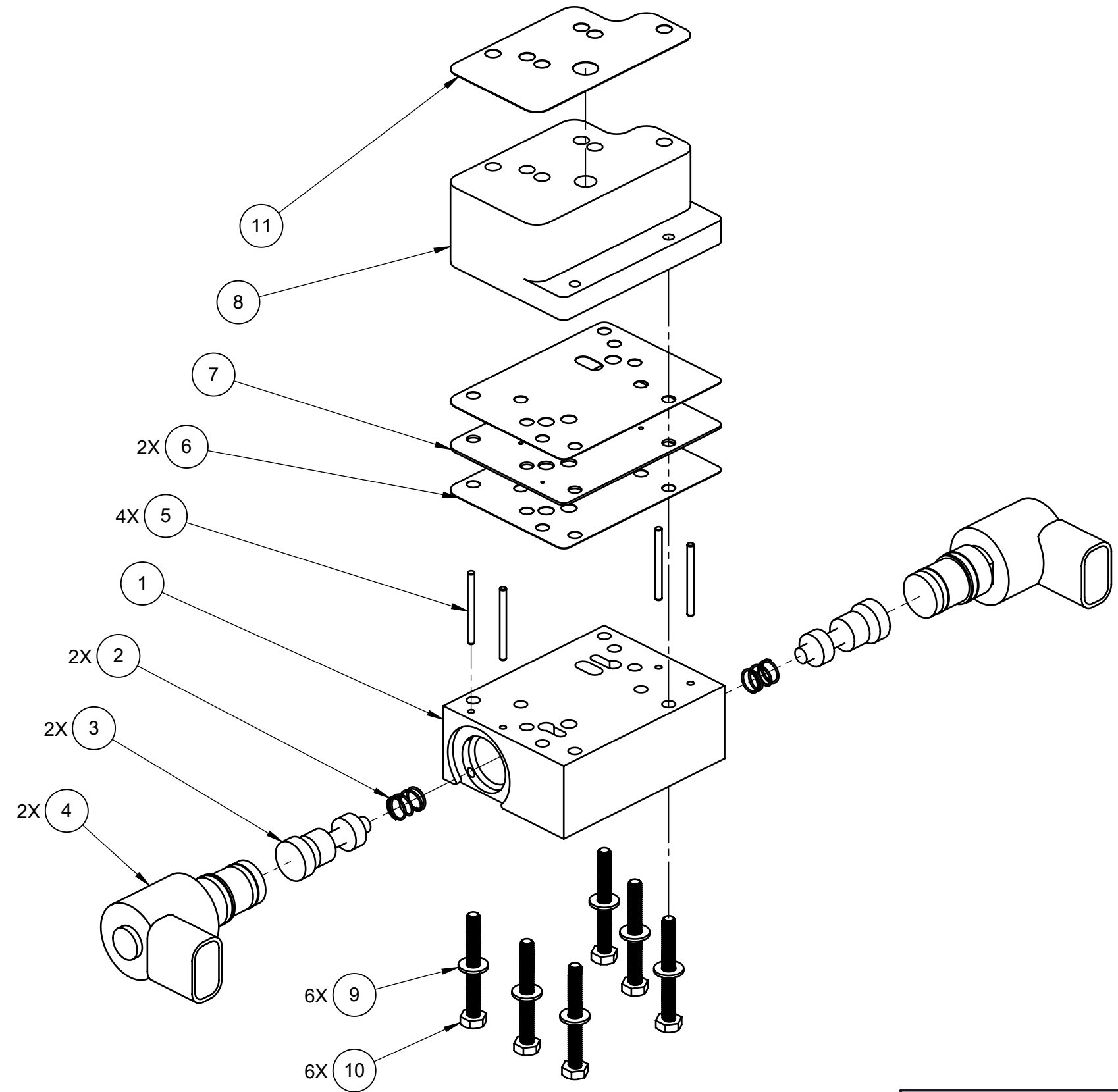


BOM #	DESCRIPTION	PCS PART #	QTY
1	TOP BLOCK - AUX BLOCK GENIII - PIN UPDATE	VBM1055	1
2	0.5X0.3 COMPRESSION SPRING	VBM1052	2
3	VALVE - AUX BLOCK GENIII	VBM1045	2
4	SOLENOID, GEN3 FWD / REV ABUSE PROTECTION	VBM1050	2
5	M2 X 24mm DOWEL PIN	VBM1056	4
6	GASKET - AUX BLOCK GENIII SPACER PLATE	VBM1044	2
7	SPACER PLATE - AUX BLOCK GENIII	VBM1043	1
8	BOTTOM BLOCK - AUX BLOCK GENIII	VBM1041	1
9	M4 FLAT WASHER	VBM1054	6
10	BOLT, M4X0.7X35mm HEX	VBM1051	6
11	GASKET - AUX BLOCK GENIII AND VALVEBODY	VBM1053	1



ISO VIEW
ASSEMBLED
SCALE: 2:3

EXPLODED ISO VIEW
ASSEMBLY ORDER
SCALE: 2:3



DESCRIPTION
4LHD GENIII (3) ABUSE PROTECTION AUX BLOCK

PROPRIETARY AND CONFIDENTIAL
THE INFORMATION CONTAINED IN THIS DRAWING IS THE SOLE PROPERTY OF PCS. ANY REPRODUCTION IN PART OR AS A WHOLE WITHOUT THE WRITTEN PERMISSION OF PCS IS PROHIBITED.

DRAWN BY	MFP	8/4/2017
ENG APPR.		
DIMENSIONS ARE IN INCHES		SCALE: 1:4 SHEET 1 OF 1

USED ON	NEXT ASSEMBLY
SIZE	DRAWING NO.
B	TRN0841
	REV
	A