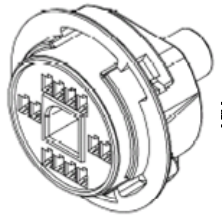


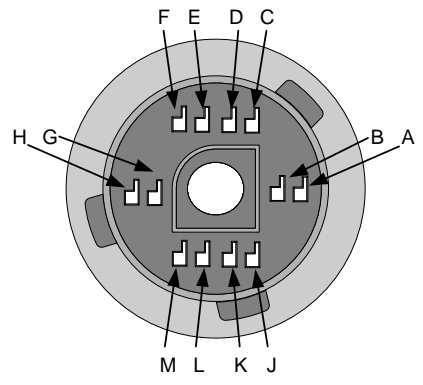
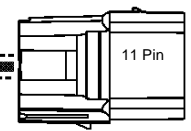
| REV. | DESCRIPTION                               | DATE      | BY |
|------|---|-----------|----|
| 0    | 1991-1992 DIAGRAM MADE FROM 1993+ DIAGRAM | 2/25/2005 | JT |
| 2    | NEW ADDRESS                               | 5/30/2010 | FD |
| 3    | REDRAW & ADD CHANGE                       | 9/28/2012 | FD |

**THIS ADAPTER USED WITH 4L80/4L85E TCU-4335 (1993+) HARNESS ACCOMODATES THE TCU-4330 (1991-1992) TRANSMISSION**

1991-1992 4L80E  
 TRANS Style  
**C1**

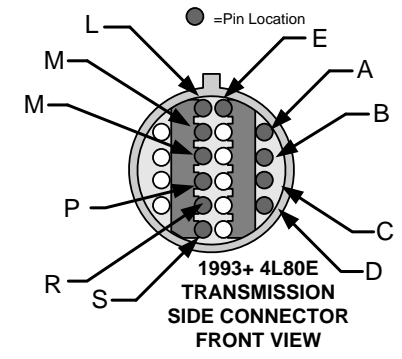


1993+ 4L80E  
 HARNESS SIDE  
**C2**



1991-1992 4L80E  
 CONNECTOR  
 FRONT VIEW

| 1991-1992 4L80E Old Style | Function        | 1993+ 4L80E Trans Side | Color          |
|---------------------------|-----------------|------------------------|----------------|
| A                         | Shift Sol A-    | A                      | pink/black     |
| B                         | Shift Sol B-    | B                      | pink/red       |
| C                         | Sol. Pw r. +12V | E                      | red (18aw g)   |
| D                         | Range A         | N                      | gray/black     |
| E                         | Range B         | R                      | gray/red       |
| F                         | Range C         | P                      | gray/lt.green  |
| G                         | TFT +           | L                      | yellow /orange |
| H                         | TFT-            | M                      | black/w hite   |
| J                         | TCC Sol-        | S                      | violet/red     |
| K                         | TCC Sol+        | E                      | red 18 aw g    |
| L                         | Line Pres+      | C                      | violet/black   |
| M                         | Line Pres-      | D                      | black          |



1993+ 4L80E  
 TRANSMISSION  
 SIDE CONNECTOR  
 FRONT VIEW

**Powertrain Control Solutions, LLC.**

10511 OLD RIDGE RD. Ashland, VA 23005  
 www.ptcs.us PHONE: (804) 111-1111  
 FAX: (804) 752-3516

DRAWN BY: F. DEARHART DATE: 1/22/2010 PAGE: 1 OF 3

TITLE:

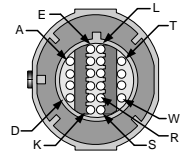
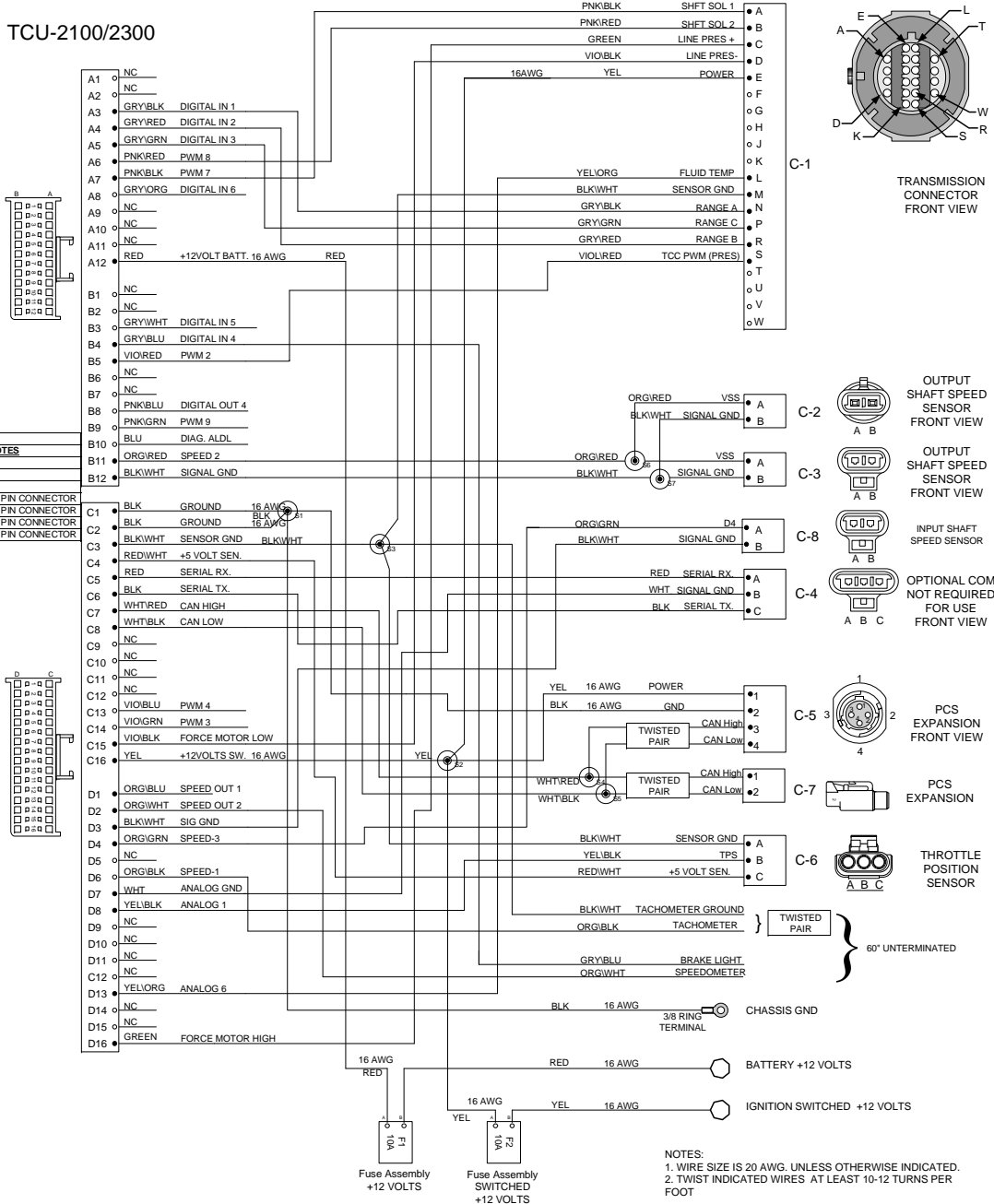
**4L80/4L85E TCU-2100/2300[1993+] HARNESS**

PART #: TCM-4335

DESCRIPTION:  
 TRANSMISSION HARNESS SCHEMATIC DIAGRAM FOR GM 4L80 TO TCU-2100/2300

| REV. | DESCRIPTION   | DATE       | BY |
|------|---|------------|----|
| 0    | Release   | 6/18/10    | FD |
| 1    | Correct splice balloon data, change fan-out pos to 3" | 7/07/10    | FD |
| 2    | CORRECTION TCC PWM PRES MOVED FROM PIN U TO S ON C-1  | 8/6/10     | FD |
| 3    | CONNECTOR TITLES CHANGED                              | 8/6/10     | FD |
| 4    | CHANGE TPS PINOUT TO 2008+ SPEC.                      | 10/11/2010 | FD |
| 5    | ADDED PIGTAIL   | 3/15/2011  | FD |

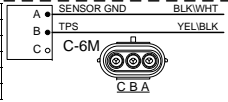
**TCU-2100/2300**



TRANSMISSION CONNECTOR FRONT VIEW

| QTY | DESCRIPTION   | PIN      | NOTES      |
|-----|---------------|----------|------------|
| 1   | CONNECTOR     | CON-2000 |            |
| 10  | TERMINAL      | CON-2804 | 20-22 AWG. |
| 1   | TERMINAL      | CON-2805 | 16-18 AWG. |
| 9   | BLOCKING PINS | CON-1044 | BLUE       |
| 1   | SEAL          | CON-3309 | LT.GREEN   |
| 1   | CONDUIT CLIP  | CON-2008 |            |
| 1   | TPA           | CON-2003 | GRY        |

| QTY | DESCRIPTION | PCS PIN  | NOTES  |
|-----|-------------|----------|--------|
| 1   | CONNECTOR   | CON-2307 |        |
| 2   | TERMINALS   | CON-1011 | 20 AWG |
| 2   | CABLE SEALS | CON-1004 | VIO    |
| 1   | PLUG        | CON-0999 | GRN    |



| TCU CONNECTOR PARTS | QTY | DESCRIPTION   | PIN       | NOTES            |
|---------------------|-----|---------------|-----------|------------------|
| 1 CONNECTOR 24P     | 1   | DELPHIPACKARD | 12059125  |                  |
| 1 CONNECTOR 32P     | 1   | DELPHIPACKARD | 12059126  |                  |
| 30 TERMINALS        | 30  | DELPHIPACKARD | 120896491 |                  |
| 1Ea LOCK TPA A:     |     | DELPHI        | 12045889  | 32 PIN CONNECTOR |
| 1Ea LOCK TPA B:     |     | DELPHI        | 12045890  | 32 PIN CONNECTOR |
| 1Ea LOCK TPA A:     |     | DELPHI        | 12047900  | 24 PIN CONNECTOR |
| 1Ea LOCK TPA B:     |     | DELPHI        | 12047901  | 24 PIN CONNECTOR |

| SPLICE INFORMATION | S#                | FUNCTION | COLOR |
|--------------------|-------------------|----------|-------|
| S1                 | GROUND            | BLK      |       |
| S2                 | 12 VOLTS SWITCHED | YEL      |       |
| S3                 | SENSOR GROUND     | BLKWHT   |       |
| S4                 | CAN HIGH          | WHTRED   |       |
| S5                 | CAN LOW           | WHTBLK   |       |
| S6                 | VSS               | ORGRED   |       |
| S7                 | VSS SENSOR GND    | BLKWHT   |       |

Statement of Conformance:  
 1.) Applicable Standards and Specifications  
 A.) ASME Y14.100-200  
 B.) ASME Y14.5M-1994  
 C.) IPC/WHMA-A-620A-CLASS 3  
 2.) MARK IAW MIL-STD-130.

| WIRE COLOR ABBREVIATIONS | TXT         | COLOR | NOTES |
|--------------------------|-------------|-------|-------|
| BLK                      | BLACK       |       |       |
| BRN                      | BROWN       |       |       |
| RED                      | RED         |       |       |
| ORN                      | ORANGE      |       |       |
| YEL                      | YELLOW      |       |       |
| LT.GRN                   | LIGHT GREEN |       |       |
| GRN                      | GREEN       |       |       |
| LT.BLU                   | LIGHT BLUE  |       |       |
| BLU                      | BLUE        |       |       |
| VIO                      | VIOLET      |       |       |
| GRY                      | GRAY        |       |       |
| WHT                      | WHITE       |       |       |
| PNK                      | PINK        |       |       |

| QTY | DESCRIPTION | PIN      | NOTES |
|-----|-------------|----------|-------|
| 1   | CONNECTOR   | CON-2306 |       |

| QTY | DESCRIPTION | PIN      | NOTES  |
|-----|-------------|----------|--------|
| 1   | CONNECTOR   | CON-2169 |        |
| 2   | PINS        | CON-1034 | 20 AWG |

| QTY | DESCRIPTION | PIN      | NOTES  |
|-----|-------------|----------|--------|
| 1   | CONNECTOR   | CON-2169 |        |
| 2   | PINS        | CON-1034 | 20 AWG |

| QTY | DESCRIPTION | PCS PIN  | NOTES |
|-----|-------------|----------|-------|
| 1   | CONNECTOR   | CON-3416 |       |
| 3   | TERMINALS   | CON-1038 |       |
| 1   | TPA         | CON-3417 | CREAM |
| 3   | CABLE SEALS | CON-1027 | WHT   |

| QTY | DESCRIPTION | PCS PIN  | NOTES |
|-----|-------------|----------|-------|
| 1   | CONNECTOR   | CON-0065 |       |
| 4   | TERMINALS   | CON-0051 |       |

| QTY | DESCRIPTION | PCS PIN  | NOTES        |
|-----|-------------|----------|--------------|
| 1   | CONNECTOR   | CON-5050 |              |
| 2   | TERMINALS   | CON-5200 | (20-18gauge) |
| 1   | WEDGE LOCK  | CON-5100 | ORN          |

| QTY | DESCRIPTION | PCS PIN  | NOTES |
|-----|-------------|----------|-------|
| 1   | CONNECTOR   | CON-2302 |       |
| 3   | TERMINALS   | CON-1006 |       |
| 3   | CABLE SEALS | CON-1004 | VIO   |

| QTY | DESCRIPTION | PIN    | NOTES    |
|-----|-------------|--------|----------|
| 1   | RING TERM.  | 327732 | CON-0350 |

| QTY | DESCRIPTION | PCS PIN  | NOTES       |
|-----|-------------|----------|-------------|
| 1   | CONNECTOR   | CON-2200 |             |
| 1   | FUSE CAP.   | CON-2201 | BLK         |
| 1   | TPA         | CON-2202 | BLU         |
| 2   | TERMINAL    | CON-1020 | (18-16 AWG) |
| 1   | FUSE        | CON-2221 | 10A         |
| 2   | CABLE SEAL  | CON-1001 | GRN         |

NOTES:  
 1. WIRE SIZE IS 20 AWG, UNLESS OTHERWISE INDICATED.  
 2. TWIST INDICATED WIRES AT LEAST 10-12 TURNS PER FOOT

**Powertrain Control Solutions, LLC.**

10511 OLD RIDGE RD. Ashland, VA 23005  
 www.ptcs.us PHONE: (804) 111-1111  
 FAX: (804) 752-3516

DRAWN BY: F. DEARHART DATE: 1/21/2010 PAGE: 2 OF 3

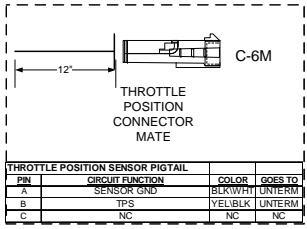
TITLE:

**4L80/4L85E TCU-2100/2300[1993+] HARNESS**

PART #: TCM-4335

DESCRIPTION:  
 TRANSMISSION HARNESS LINE LAYOUT DIAGRAM FOR GM 4L80 TO TCU-2100/2300

| REV. | DESCRIPTION   | DATE       | BY |
|------|---|------------|----|
| 0    | Release   | 6/18/10    | FD |
| 1    | Correct splice balloon data, change fan-out pos to 3" | 7/6/10     | FD |
| 2    | CORRECTION TCC PWM PRES MOVED FROM PIN U TO S ON C-1  | 8/6/10     | FD |
| 3    | CONNECTOR TITLES CHANGED                              | 10/11/2010 | FD |
| 4    | CHANGE TPS PINOUT TO 2008+ SPEC.                      | 10/11/2010 | FD |
| 5    | ADDED PIGTAIL   | 3/15/2011  | FD |



| PIN | CIRCUIT FUNCTION | COLOR   | CONNECTS TO |
|-----|------------------|---------|-------------|
| 1   | POWER            | YEL     | S2          |
| 2   | GND.             | BLK     | S1          |
| 3   | CAN HIGH         | WHT/RED | TCU-C7      |
| 4   | CAN LOW          | WHT/BLK | TCU-C8      |

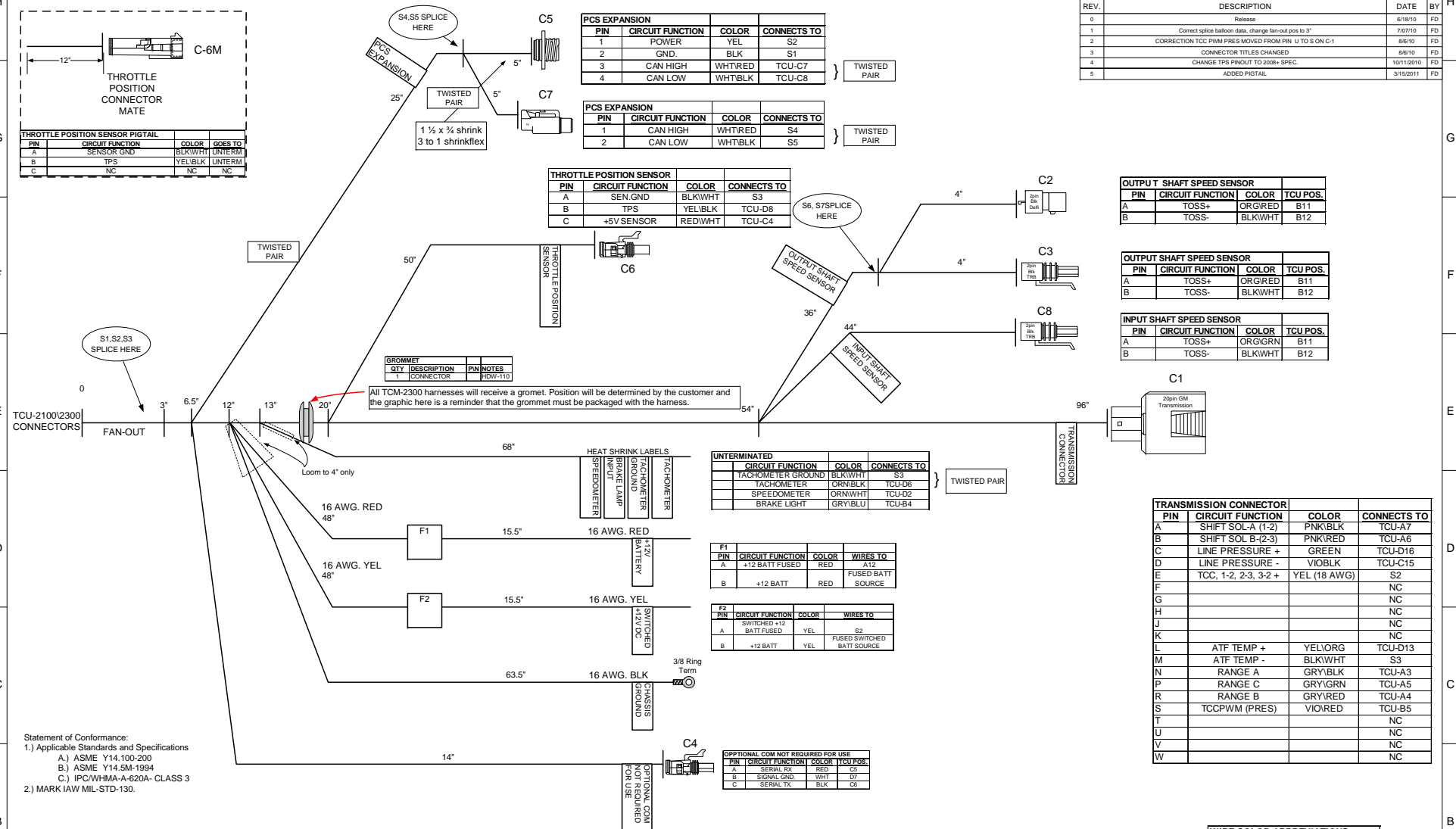
| PIN | CIRCUIT FUNCTION | COLOR   | CONNECTS TO |
|-----|------------------|---------|-------------|
| 1   | CAN HIGH         | WHT/RED | S4          |
| 2   | CAN LOW          | WHT/BLK | S5          |

| PIN | CIRCUIT FUNCTION | COLOR   | CONNECTS TO |
|-----|------------------|---------|-------------|
| A   | SEN.GND          | BLK/WHT | S3          |
| B   | TPS              | YEL/BLK | TCU-D8      |
| C   | +5V SENSOR       | RED/WHT | TCU-C4      |

| PIN | CIRCUIT FUNCTION | COLOR   | TCU POS. |
|-----|------------------|---------|----------|
| A   | TOSS+            | ORG/RED | B11      |
| B   | TOSS-            | BLK/WHT | B12      |

| PIN | CIRCUIT FUNCTION | COLOR   | TCU POS. |
|-----|------------------|---------|----------|
| A   | TOSS+            | ORG/RED | B11      |
| B   | TOSS-            | BLK/WHT | B12      |

| PIN | CIRCUIT FUNCTION | COLOR   | TCU POS. |
|-----|------------------|---------|----------|
| A   | TOSS+            | ORG/GRN | B11      |
| B   | TOSS-            | BLK/WHT | B12      |



| CIRCUIT FUNCTION  | COLOR   | CONNECTS TO |
|-------------------|---------|-------------|
| TACHOMETER GROUND | BLK/WHT | S3          |
| TACHOMETER        | GRN/BLK | TCU-D6      |
| SPEEDOMETER       | GRN/WHT | TCU-D2      |
| BRAKE LIGHT       | GRY/BLU | TCU-B4      |

| PIN | CIRCUIT FUNCTION | COLOR | WIRES TO          |
|-----|------------------|-------|-------------------|
| A   | +12 BATT FUSED   | RED   | A12               |
| B   | +12 BATT         | RED   | FUSED BATT SOURCE |

| PIN | CIRCUIT FUNCTION        | COLOR | WIRES TO                   |
|-----|-------------------------|-------|----------------------------|
| A   | SWITCHED +12 BATT FUSED | YEL   | S2                         |
| B   | +12 BATT                | YEL   | FUSED SWITCHED BATT SOURCE |

| PIN | CIRCUIT FUNCTION | COLOR | TCU POS. |
|-----|------------------|-------|----------|
| A   | SERIAL TX        | RED   | C5       |
| B   | SIGNAL GND       | WHT   | D7       |
| C   | SERIAL TX        | BLK   | D8       |

| PIN | CIRCUIT FUNCTION     | COLOR        | CONNECTS TO |
|-----|----------------------|--------------|-------------|
| A   | SHIFT SOL-A (1-2)    | PNK/BLK      | TCU-A7      |
| B   | SHIFT SOL B-(2-3)    | PNK/RED      | TCU-A6      |
| C   | LINE PRESSURE +      | GREEN        | TCU-D16     |
| D   | LINE PRESSURE -      | VIOLBK       | TCU-C15     |
| E   | TCC, 1-2, 2-3, 3-2 + | YEL (18 AWG) | S2          |
| F   |                      |              | NC          |
| G   |                      |              | NC          |
| H   |                      |              | NC          |
| J   |                      |              | NC          |
| K   |                      |              | NC          |
| L   | ATF TEMP +           | YEL/ORG      | TCU-D13     |
| M   | ATF TEMP -           | BLK/WHT      | S3          |
| N   | RANGE A              | GRY/BLK      | TCU-A3      |
| P   | RANGE C              | GRY/GRN      | TCU-A5      |
| R   | RANGE B              | GRY/RED      | TCU-A4      |
| S   | TCCPWM (PRES)        | VIO/RED      | TCU-B5      |
| T   |                      |              | NC          |
| U   |                      |              | NC          |
| V   |                      |              | NC          |
| W   |                      |              | NC          |

Statement of Conformance:  
 1.) Applicable Standards and Specifications  
 A.) ASME Y14.100-200  
 B.) ASME Y14.5M-1994  
 C.) IPC/WHMA-A-620A- CLASS 3  
 2.) MARK IAW MIL-STD-130.

- NOTES:  
 1. WIRE SIZE IS 20 AWG. UNLESS OTHERWISE INDICATED.  
 2. TWIST INDICATED WIRE AT LEAST 10-12 TURNS PER FOOT.  
 3. TAPE ALL LOOM JOINTS.  
 4. WIRE LENGTHS AND SPLICE LOCATIONS WILL BE ADDED TO TABLE AFTER FIRST HARNESS IS COMPLETED.  
 5. ALL TAGS ARE PLACED NO MORE THAN 2" FROM CONNECTOR OR WIRE END.  
 6. MAIN WIRE TRUNK WIRE LENGTH IS A CONTINUOUS MEASUREMENT 0-60". DISTANCES BETWEEN BREAK LINES ARE IN ADDITION TO MAIN TRUNK LENGTH.

| S-# | FUNCTION          | COLOR   |
|-----|-------------------|---------|
| S1  | GROUND            | BLK     |
| S2  | 12 VOLTS SWITCHED | YEL     |
| S3  | SENSOR GROUND     | BLK/WHT |
| S4  | CAN HIGH          | WHT/RED |
| S5  | CAN LOW           | WHT/BLK |
| S6  | VSS               | ORG/RED |
| S7  | VSS SENSOR GND    | BLK/WHT |

| TXT    | COLOR       | NOTES |
|--------|-------------|-------|
| BLK    | BLACK       |       |
| BRN    | BROWN       |       |
| RED    | RED         |       |
| ORG    | ORANGE      |       |
| YEL    | YELLOW      |       |
| LT.GRN | LIGHT GREEN |       |
| GRN    | GREEN       |       |
| LT.BLU | LIGHT BLUE  |       |
| BLU    | BLUE        |       |
| VIO    | VIOLET      |       |
| GRY    | GRAY        |       |
| WHT    | WHITE       |       |
| PNK    | PINK        |       |